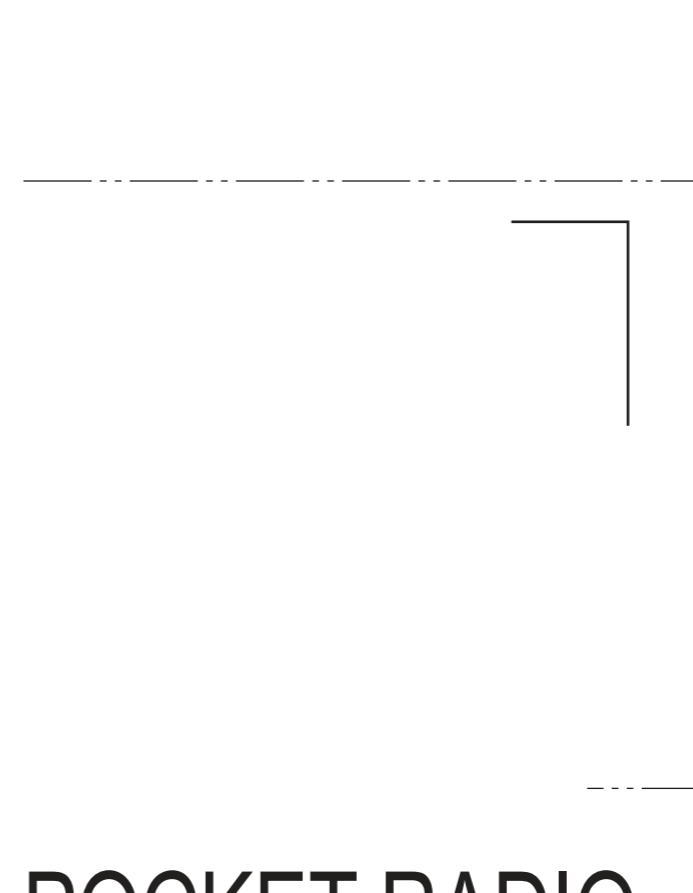
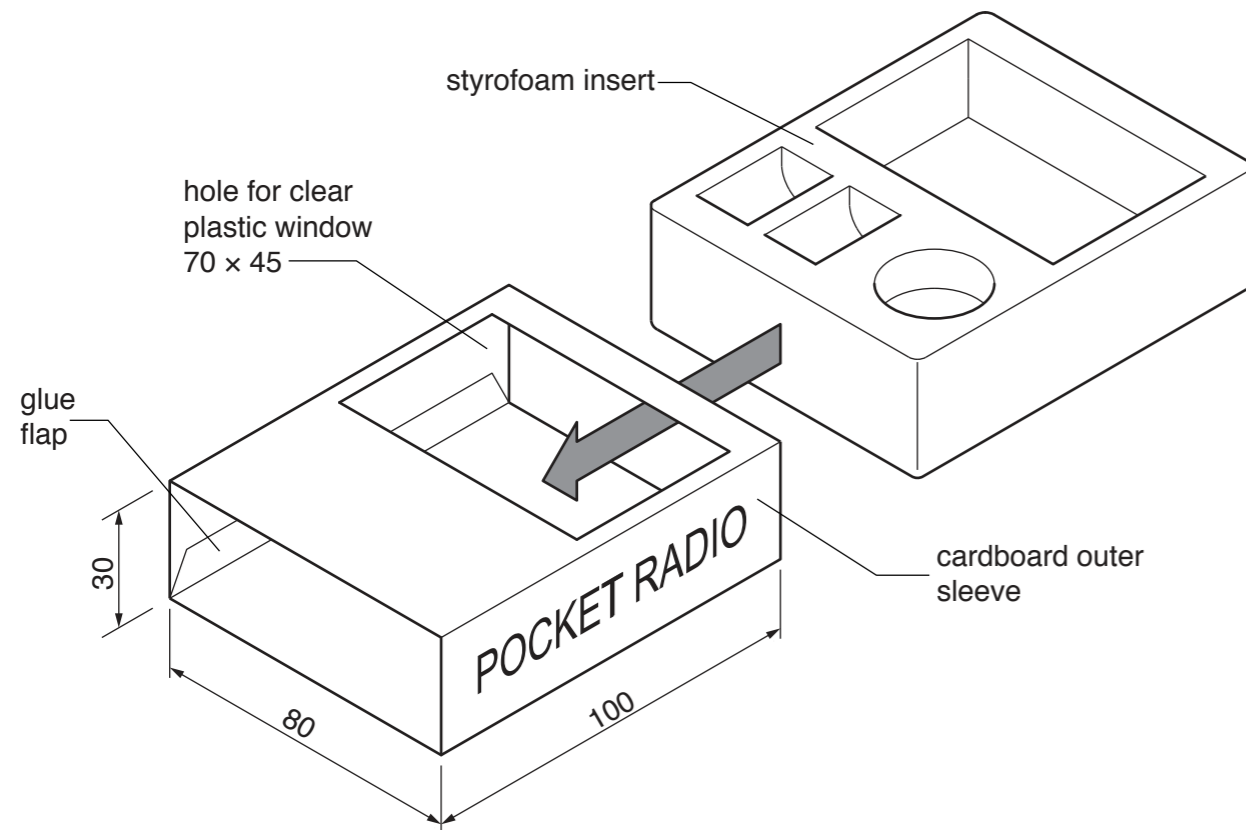


**Section A**

Answer **all** questions in this section.

A package for a pocket radio is shown below.



# POCKET RADIO

The package has a cardboard outer sleeve with a clear plastic window. The styrofoam insert fits inside the sleeve.

**A1** Complete the full size development (net) of the cardboard sleeve by drawing:

- (a) the outer shape of the development (net) [5]
- (b) the glue flap (10 mm wide) [2]
- (c) the rectangular hole for the clear plastic window. [1]

**A2** (a) State a suitable adhesive for:

(i) fixing the cardboard sleeve together  
 ..... [1]

(ii) fixing the clear plastic window in place.  
 ..... [1]

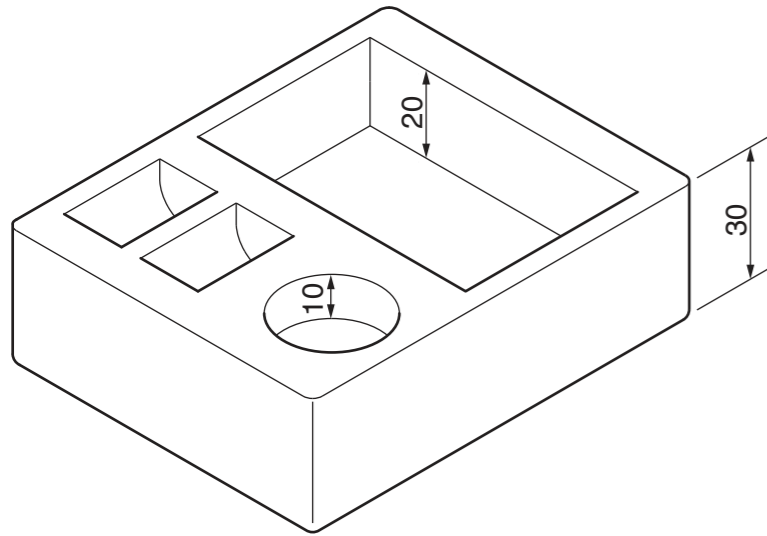
(b) State a suitable material for the clear plastic window.  
 ..... [1]

For  
Examiner's  
use

**0445/23** Oct/Nov 2019 **1 hour**  
 © UCLES 2019 DC (CE/SW) 164717/3

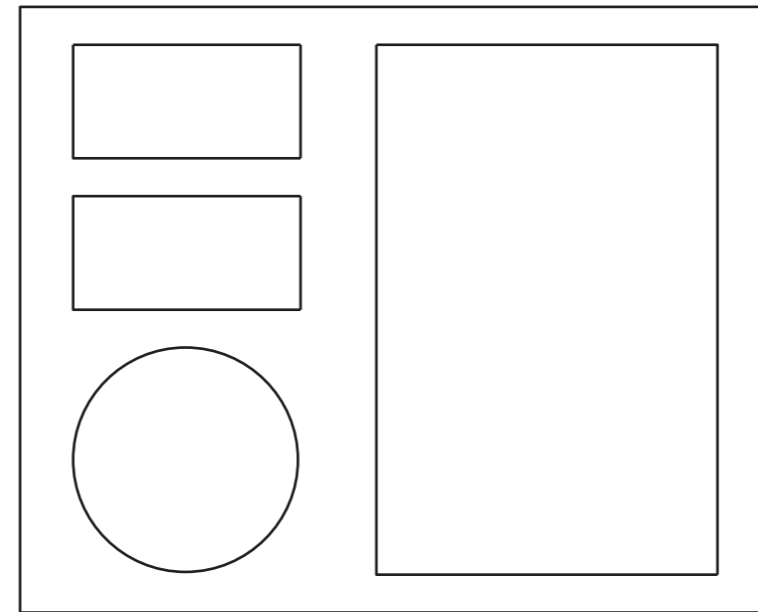
Centre Number ..... Candidate Number ..... Candidate Surname ..... Other Names ..... **[Turn over]**

**A3** The foam insert is shown below.

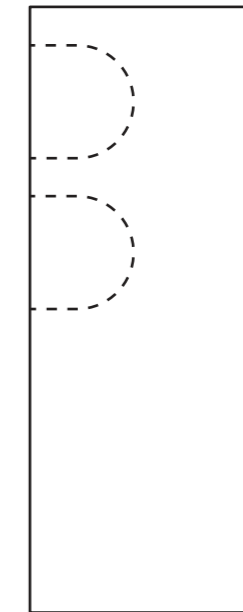


(a) Complete the orthographic view to the right by drawing:

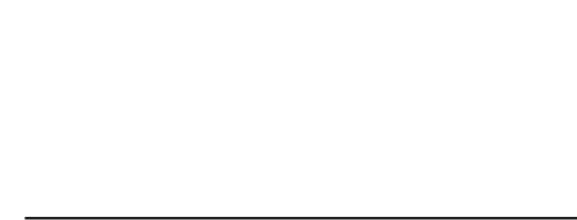
- (i) the missing hidden detail on the side view [4]
- (ii) the front view including hidden detail. [7]



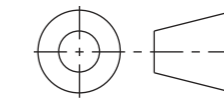
plan view



side view



front view



(b) The front view of the sleeve is shown to the right.

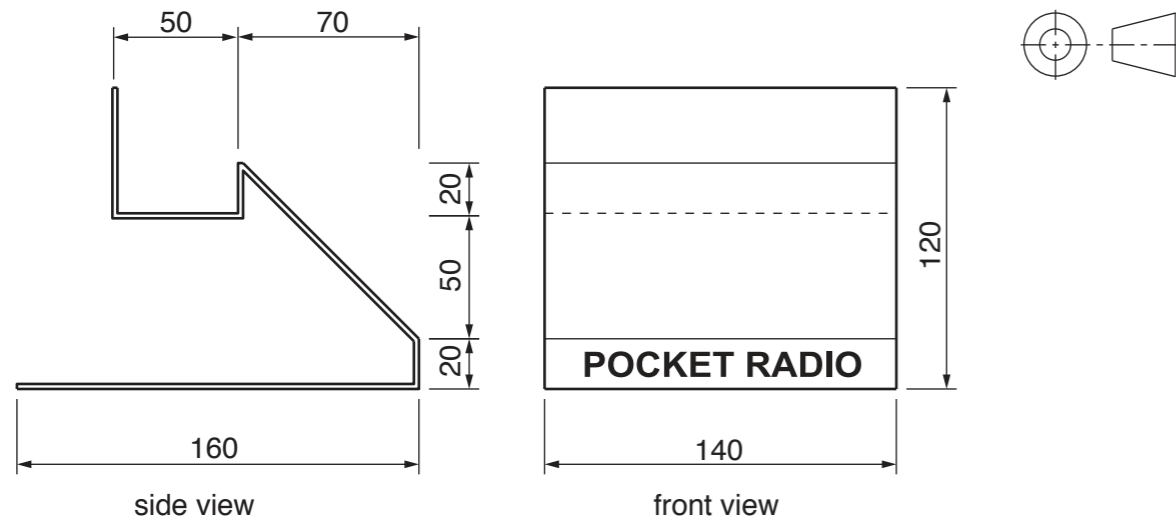
- (i) State the scale that the front view of the sleeve has been drawn to.  
.....[1]
- (ii) Complete the missing letters of POCKET RADIO on the front view of the sleeve. [2]



**Section B**  
Answer **either** question **B4** or **B5**.

**B4** Orthographic views of a point of sale display stand for the pocket radio are shown below.

The stand is made from 2 mm acrylic.



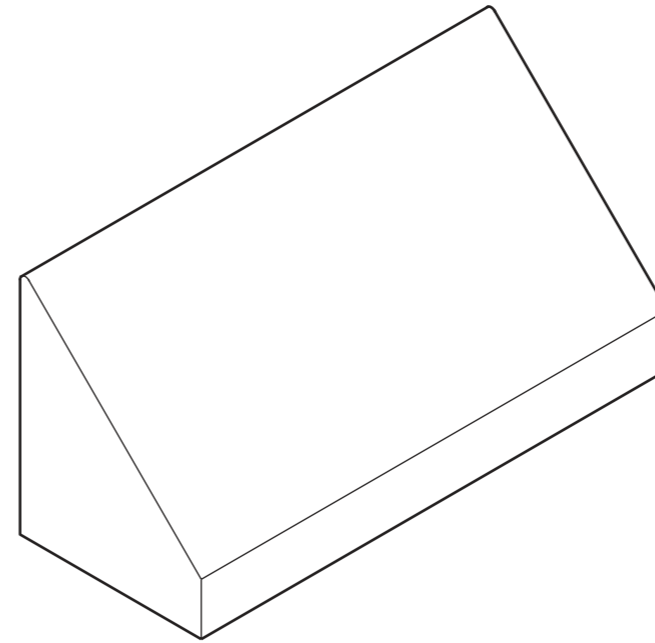
(a) Complete the half scale isometric view of the display stand below. Ignore the thickness of the material.

[11]

**POCKET RADIO**

(b) The point of sale display is made using wooden formers. One of the formers is shown below.

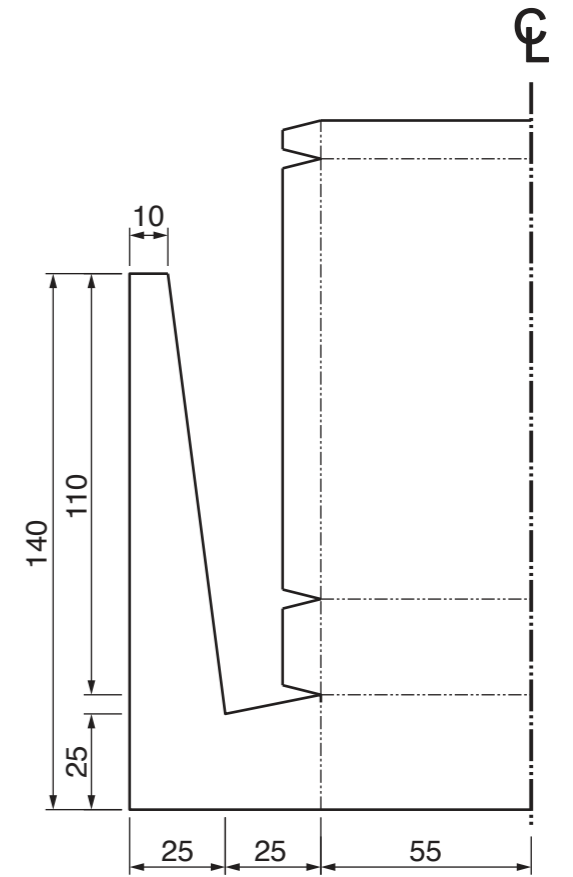
Add rendering to make the former look like softwood. [4]



Complete in the space below a one point perspective view of the fully assembled development (net) to a scale of 1:2. [10]

(c) The left hand half of a development (net) for another point of sale display is shown below.

The development (net) is made from card.



V.P.

**0445/23** Oct/Nov 2019 **1 hour**  
© UCLES 2019 DC (CE/SW) 164717/3

Centre Number .....

Candidate Number .....

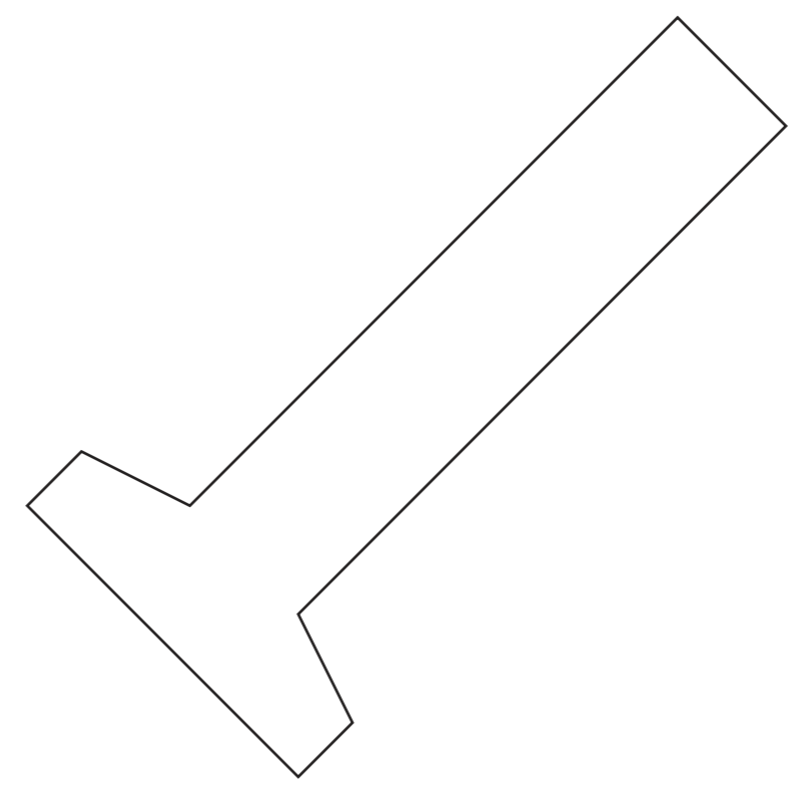
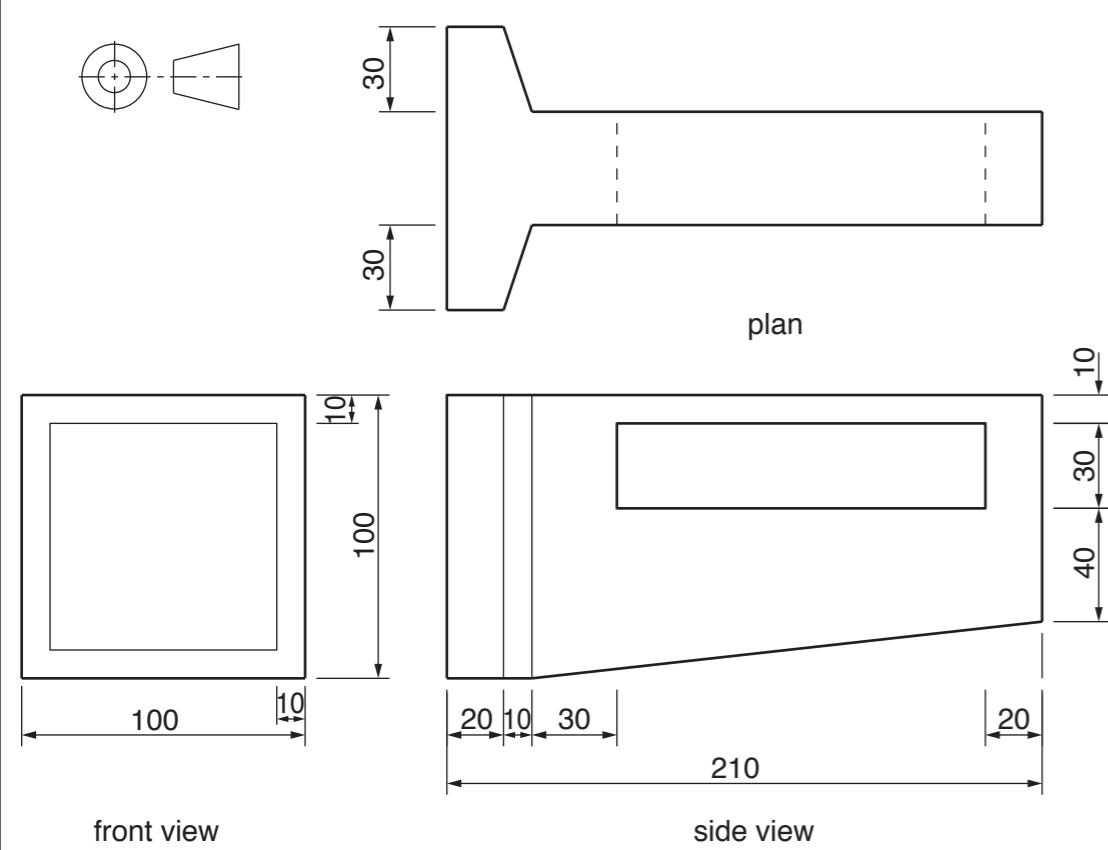
Candidate Surname .....

Other Names .....

[Turn over]

For Examiner's use

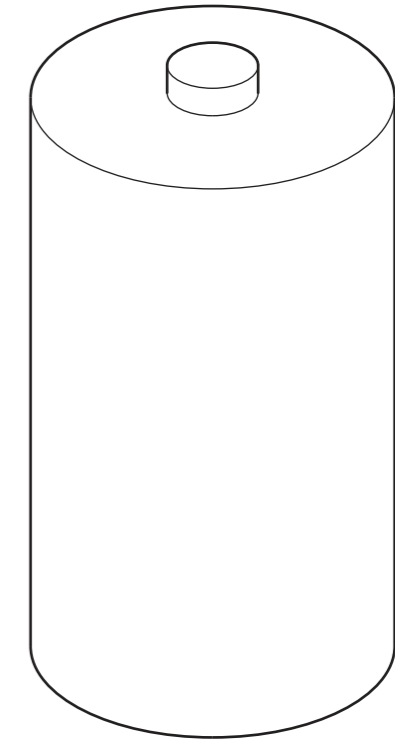
**B5** Orthographic views of a handheld torch are shown below.



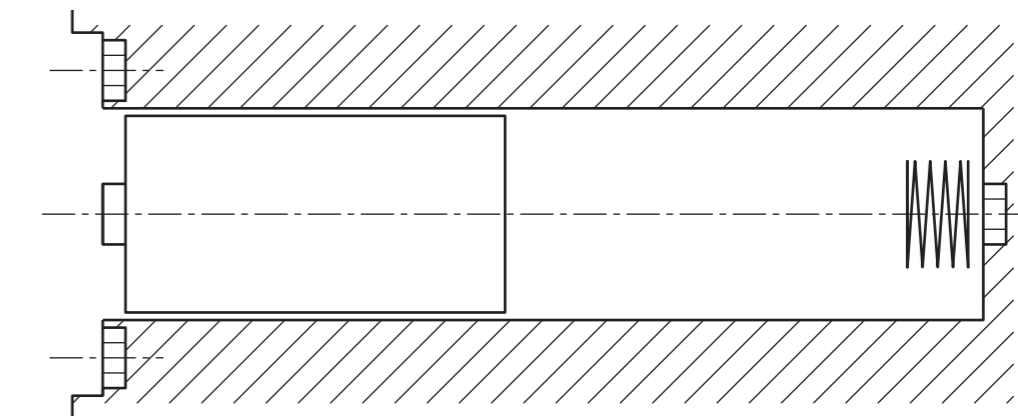
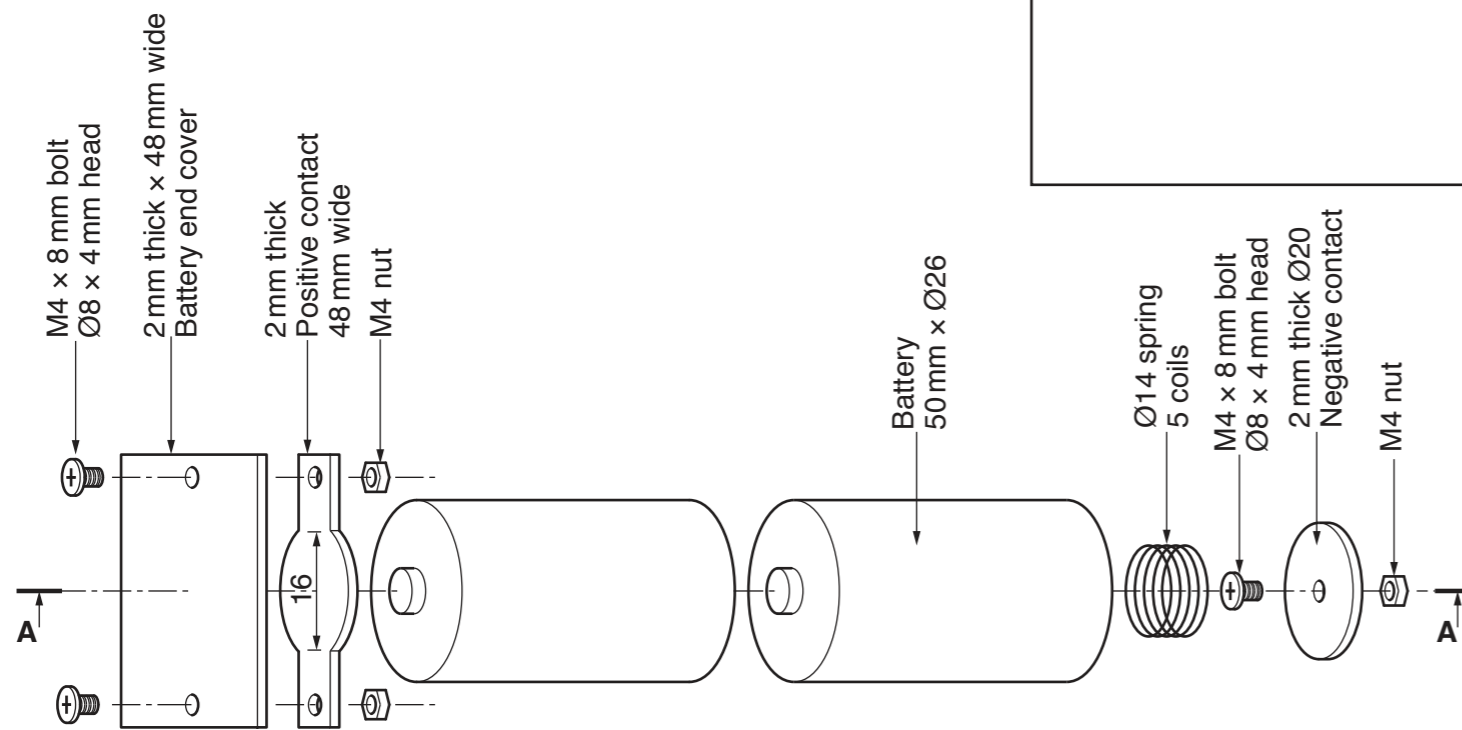
(a) Complete the planometric view of the torch to a scale of 1:2. [11]

(b) One of the batteries for the torch is shown below.

Render the battery to look 3 dimensional (3D). [3]



(c) An exploded view of the battery compartment assembly is shown below.



Sectional view on A-A

Complete the full size sectional view through the battery compartment in the space to the right. [11]